

## BRYANS GREEN . BRYANS ROAD, MD

Matthews Road, Parcel 396



Boundary lines for reference only. Not to exact scale.

- 16.25 Acres
- CMR Zoned
- Subdivision plan for 128 single family town homes
- Located behind the Safeway anchored Bryans Road Shopping Center off of Route 227

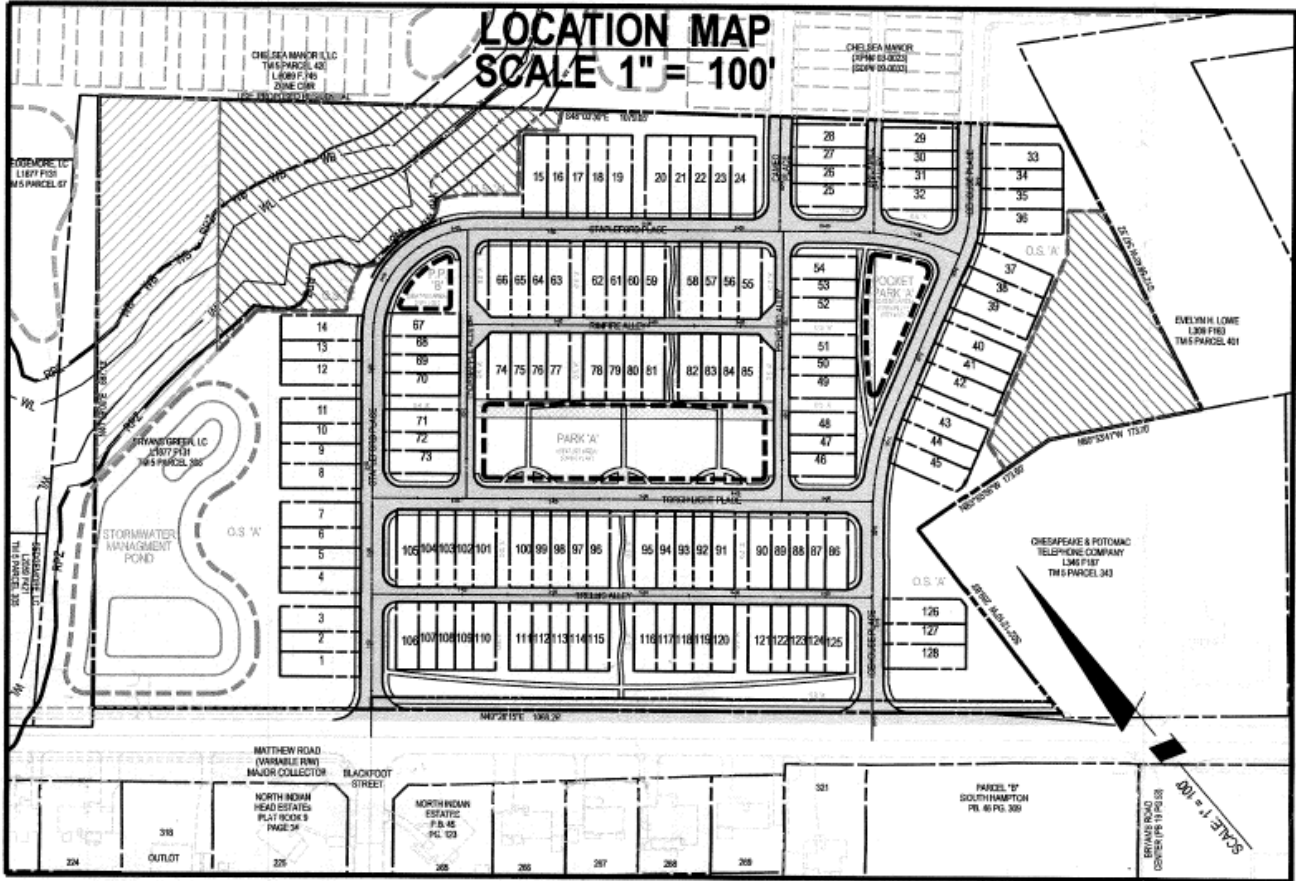
For More Information  
Please Contact:

Harry Shasho [HShasho@Shasho.com](mailto:HShasho@Shasho.com)  
Chris Shasho [Cshasho@Shasho.com](mailto:Cshasho@Shasho.com)  
(301) 632-6320 Fax (301) 632-6323

4475 REGENCY PLACE, SUITE 101  
WHITE PLAINS, MARYLAND 20695

**Shasho.com**





Information herein has been obtained from sources believed to be reliable. While we do not doubt its accuracy, we have not verified it and make no guarantee, warranty or representation about it. References to square footage or age are approximate. Any information of special interest should be obtained through independent verification. Buyer or Tenant bears all risk for any inaccuracies.

