

LAND AVAILABLE—INDUSTRIAL/COMMERCIAL
3245 LEONARDTOWN RD, WALDORF, MD



For Sale

- Sales Price \$3,500,000
- 17+ Acres
- Commercial and Industrial Zones
- Located in the heart of Waldorf, Maryland with easy access to Charles, St. Mary's and Calvert counties on business Route 5. Only a thirty minute drive to Washington D.C. 28,002 Cars Daily
- County water and sewer

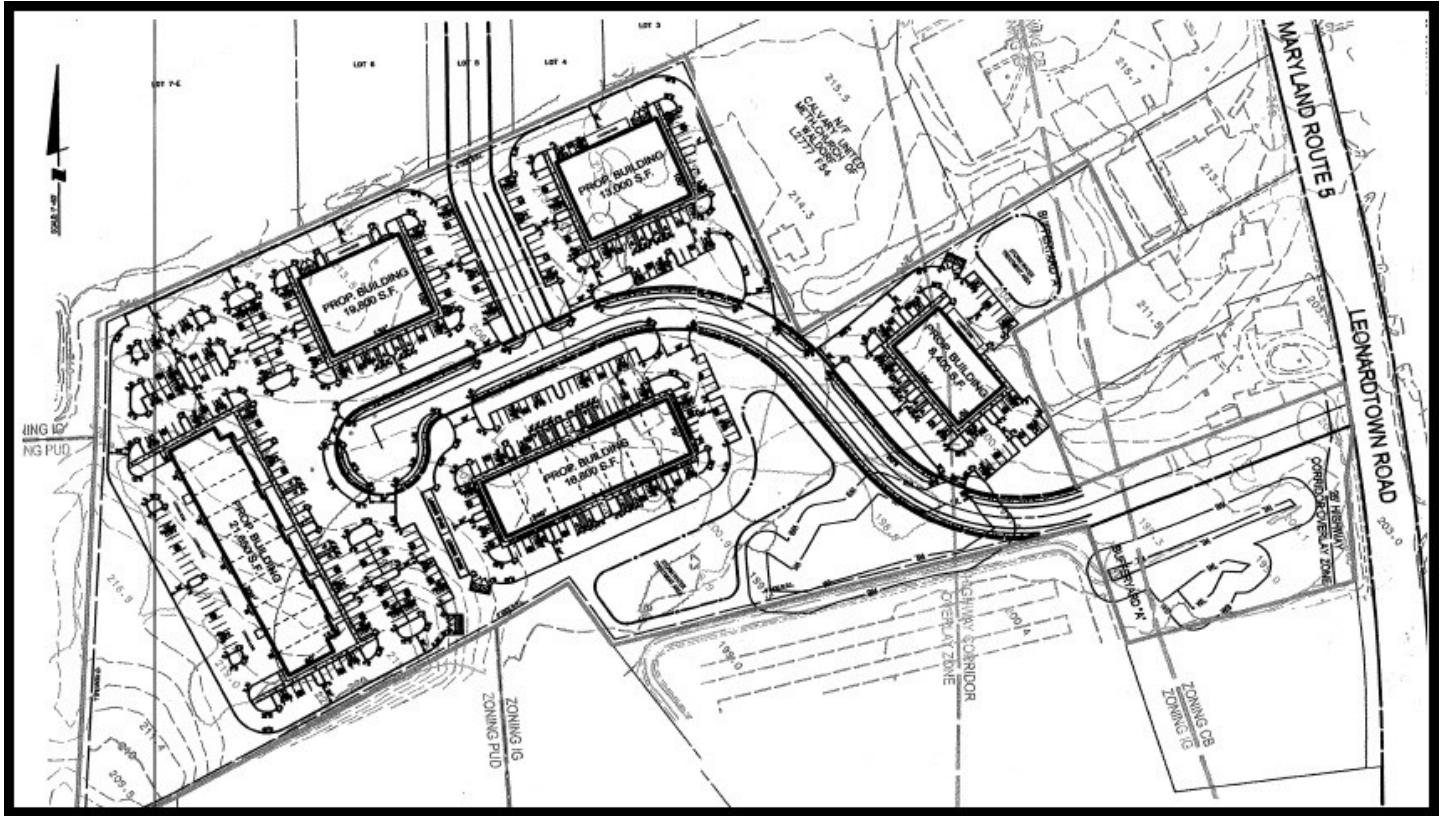
For More Information
Please Contact:

Harry Shasho HShasho@Shasho.com
Teresa Shasho Tshasho@Shasho.com
(301) 632-6320 Fax (301) 632-6323

4475 REGENCY PLACE, SUITE 101
WHITE PLAINS, MARYLAND 20695

Shasho.com





* Concept plan for a Industrial Park

Demographics 2016	1 Mile	3 Mile	5 Mile
Population	4,447	60,973	86,765
Households	1,737	21,294	29,873
Avg. HH Inc.	\$83,584	\$104,842	\$112,576

Information herein has been obtained from sources believed to be reliable. While we do not doubt its accuracy, we have not verified it and make no guarantee, warranty or representation about it. References to square footage or age are approximate. Any information of special interest should be obtained through independent verification. Buyer or Tenant bears all risk for any inaccuracies.

